

Economic Growth I: Capital Accumulation and Population Growth

The question of growth is nothing new but a new disguise for an age-old issue, one which has always intrigued and preoccupied economics: the present versus the future.

—James Tobin

If you have ever spoken with your grandparents about what their lives were like when they were young, most likely you learned an important lesson about economic growth: material standards of living have improved substantially over time for most families in most countries. This advance comes from rising incomes, which have allowed people to consume greater quantities of goods and services.

To measure economic growth, economists use data on gross domestic product, which measures the total income of everyone in the economy. The real GDP of the United States today is more than five times its 1950 level, and real GDP per person is more than three times its 1950 level. In any given year, we also observe large differences in the standard of living among countries. Table 7-1 shows the 2007 income per person in the world's 14 most populous countries. The United States tops the list with an income of \$45,790 per person. Bangladesh has an income per person of only \$1,242—less than 3 percent of the figure for the United States.

Our goal in this part of the book is to understand what causes these differences in income over time and across countries. In Chapter 3 we identified the factors of production—capital and labor—and the production technology as the sources of the economy's output and, thus, of its total income. Differences in income, then, must come from differences in capital, labor, and technology.

Our primary task in this chapter and the next is to develop a theory of economic growth called the **Solow growth model**. Our analysis in Chapter 3 enabled us to describe how the economy produces and uses its output at one point in time. The analysis was static—a snapshot of the economy. To explain why our national income grows, and why some economies grow faster than others, we must broaden our analysis so that it describes changes in the economy over time. By developing such a model, we make our analysis dynamic—more like a

TABLE 7-1

International Differences in the Standard of Living

Country	Income per person (2007)	Country	Income per person (2007)
United States	\$45,790	Indonesia	3,728
Japan	33,525	Philippines	3,410
Germany	33,154	India	2,753
Russia	14,743	Vietnam	2,600
Mexico	12,780	Pakistan	2,525
Brazil	9,570	Nigeria	1,977
China	5,345	Bangladesh	1,242

Source: The World Bank.

movie than a photograph. The Solow growth model shows how saving, population growth, and technological progress affect the level of an economy's output and its growth over time. In this chapter we analyze the roles of saving and population growth. In the next chapter we introduce technological progress.¹

7-1 The Accumulation of Capital

The Solow growth model is designed to show how growth in the capital stock, growth in the labor force, and advances in technology interact in an economy as well as how they affect a nation's total output of goods and services. We will build this model in a series of steps. Our first step is to examine how the supply and demand for goods determine the accumulation of capital. In this first step, we assume that the labor force and technology are fixed. We then relax these assumptions by introducing changes in the labor force later in this chapter and by introducing changes in technology in the next.

The Supply and Demand for Goods

The supply and demand for goods played a central role in our static model of the closed economy in Chapter 3. The same is true for the Solow model. By considering the supply and demand for goods, we can see what determines how

¹ The Solow growth model is named after economist Robert Solow and was developed in the 1950s and 1960s. In 1987 Solow won the Nobel Prize in economics for his work on economic growth. The model was introduced in Robert M. Solow, "A Contribution to the Theory of Economic Growth," *Quarterly Journal of Economics* (February 1956): 65–94.

much output is produced at any given time and how this output is allocated among alternative uses.

The Supply of Goods and the Production Function The supply of goods in the Solow model is based on the production function, which states that output depends on the capital stock and the labor force:

$$Y = F(K, L).$$

The Solow growth model assumes that the production function has constant returns to scale. This assumption is often considered realistic, and, as we will see shortly, it helps simplify the analysis. Recall that a production function has constant returns to scale if

$$zY = F(zK, zL)$$

for any positive number z . That is, if both capital and labor are multiplied by z , the amount of output is also multiplied by z .

Production functions with constant returns to scale allow us to analyze all quantities in the economy relative to the size of the labor force. To see that this is true, set $z = 1/L$ in the preceding equation to obtain

$$Y/L = F(K/L, 1).$$

This equation shows that the amount of output per worker Y/L is a function of the amount of capital per worker K/L . (The number 1 is constant and thus can be ignored.) The assumption of constant returns to scale implies that the size of the economy—as measured by the number of workers—does not affect the relationship between output per worker and capital per worker.

Because the size of the economy does not matter, it will prove convenient to denote all quantities in per worker terms. We designate quantities per worker with lowercase letters, so $y = Y/L$ is output per worker, and $k = K/L$ is capital per worker. We can then write the production function as

$$y = f(k),$$

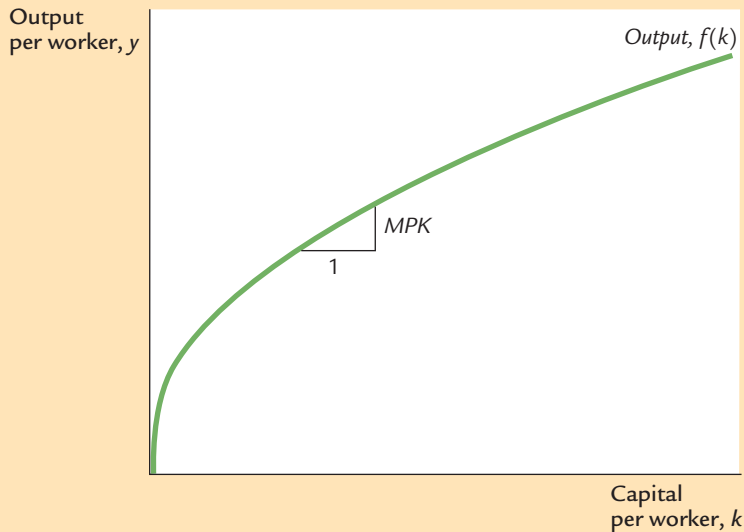
where we define $f(k) = F(k, 1)$. Figure 7-1 illustrates this production function.

The slope of this production function shows how much extra output a worker produces when given an extra unit of capital. This amount is the marginal product of capital MPK . Mathematically, we write

$$MPK = f(k + 1) - f(k).$$

Note that in Figure 7-1, as the amount of capital increases, the production function becomes flatter, indicating that the production function exhibits diminishing marginal product of capital. When k is low, the average worker has only a little capital to work with, so an extra unit of capital is very useful and produces a lot of additional output. When k is high, the average worker has a lot of capital already, so an extra unit increases production only slightly.

FIGURE 7-1



The Production Function The production function shows how the amount of capital per worker k determines the amount of output per worker $y = f(k)$. The slope of the production function is the marginal product of capital: if k increases by 1 unit, y increases by MPK units. The production function becomes flatter as k increases, indicating diminishing marginal product of capital.

The Demand for Goods and the Consumption Function The demand for goods in the Solow model comes from consumption and investment. In other words, output per worker y is divided between consumption per worker c and investment per worker i :

$$y = c + i.$$

This equation is the per-worker version of the national income accounts identity for an economy. Notice that it omits government purchases (which for present purposes we can ignore) and net exports (because we are assuming a closed economy).

The Solow model assumes that each year people save a fraction s of their income and consume a fraction $(1 - s)$. We can express this idea with the following consumption function:

$$c = (1 - s)y,$$

where s , the saving rate, is a number between zero and one. Keep in mind that various government policies can potentially influence a nation's saving rate, so one of our goals is to find what saving rate is desirable. For now, however, we just take the saving rate s as given.

To see what this consumption function implies for investment, substitute $(1 - s)y$ for c in the national income accounts identity:

$$y = (1 - s)y + i.$$

Rearrange the terms to obtain

$$i = sy.$$

This equation shows that investment equals saving, as we first saw in Chapter 3. Thus, the rate of saving s is also the fraction of output devoted to investment.

We have now introduced the two main ingredients of the Solow model—the production function and the consumption function—which describe the economy at any moment in time. For any given capital stock k , the production function $y = f(k)$ determines how much output the economy produces, and the saving rate s determines the allocation of that output between consumption and investment.

Growth in the Capital Stock and the Steady State

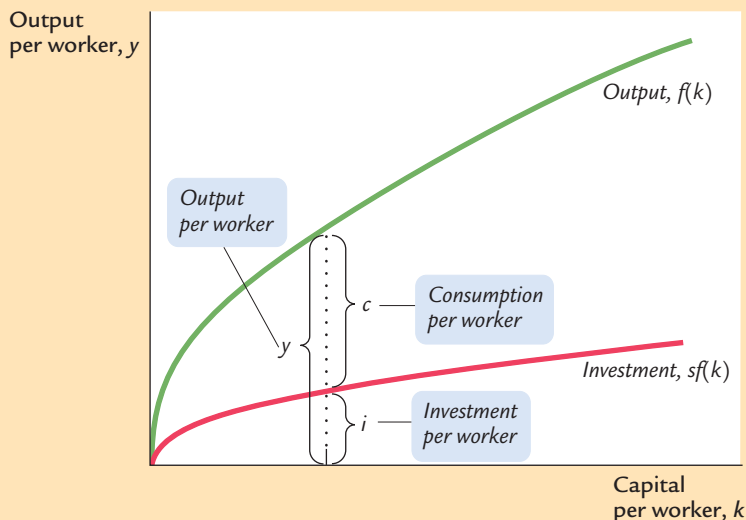
At any moment, the capital stock is a key determinant of the economy's output, but the capital stock can change over time, and those changes can lead to economic growth. In particular, two forces influence the capital stock: investment and depreciation. *Investment* is expenditure on new plant and equipment, and it causes the capital stock to rise. *Depreciation* is the wearing out of old capital, and it causes the capital stock to fall. Let's consider each of these forces in turn.

As we have already noted, investment per worker i equals sy . By substituting the production function for y , we can express investment per worker as a function of the capital stock per worker:

$$i = sf(k).$$

This equation relates the existing stock of capital k to the accumulation of new capital i . Figure 7-2 shows this relationship. This figure illustrates how, for any value of k , the amount of output is determined by the production function $f(k)$,

FIGURE 7-2



Output, Consumption, and Investment The saving rate s determines the allocation of output between consumption and investment. For any level of capital k , output is $f(k)$, investment is $sf(k)$, and consumption is $f(k) - sf(k)$.

and the allocation of that output between consumption and saving is determined by the saving rate s .

To incorporate depreciation into the model, we assume that a certain fraction δ of the capital stock wears out each year. Here δ (the lowercase Greek letter delta) is called the *depreciation rate*. For example, if capital lasts an average of 25 years, then the depreciation rate is 4 percent per year ($\delta = 0.04$). The amount of capital that depreciates each year is δk . Figure 7-3 shows how the amount of depreciation depends on the capital stock.

We can express the impact of investment and depreciation on the capital stock with this equation:

$$\text{Change in Capital Stock} = \text{Investment} - \text{Depreciation}$$

$$\Delta k = i - \delta k,$$

where Δk is the change in the capital stock between one year and the next. Because investment i equals $sf(k)$, we can write this as

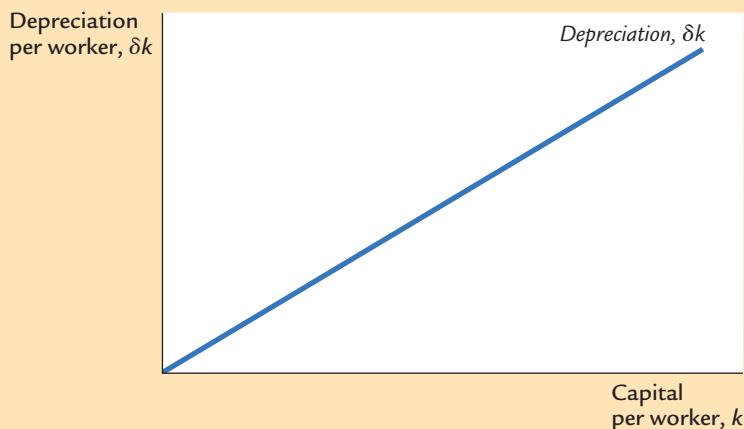
$$\Delta k = sf(k) - \delta k.$$

Figure 7-4 graphs the terms of this equation—investment and depreciation—for different levels of the capital stock k . The higher the capital stock, the greater the amounts of output and investment. Yet the higher the capital stock, the greater also the amount of depreciation.

As Figure 7-4 shows, there is a single capital stock k^* at which the amount of investment equals the amount of depreciation. If the economy finds itself at this level of the capital stock, the capital stock will not change because the two forces acting on it—investment and depreciation—just balance. That is, at k^* , $\Delta k = 0$, so the capital stock k and output $f(k)$ are steady over time (rather than growing or shrinking). We therefore call k^* the **steady-state** level of capital.

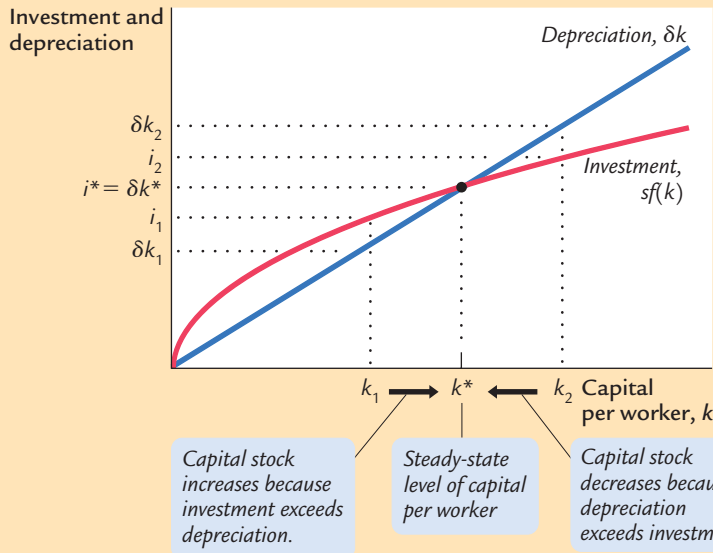
The steady state is significant for two reasons. As we have just seen, an economy at the steady state will stay there. In addition, and just as important,

FIGURE 7-3



Depreciation A constant fraction δ of the capital stock wears out every year. Depreciation is therefore proportional to the capital stock.

FIGURE 7-4



Investment, Depreciation, and the Steady State The steady-state level of capital k^* is the level at which investment equals depreciation, indicating that the amount of capital will not change over time. Below k^* investment exceeds depreciation, so the capital stock grows. Above k^* investment is less than depreciation, so the capital stock shrinks.

an economy *not* at the steady state will go there. That is, regardless of the level of capital with which the economy begins, it ends up with the steady-state level of capital. In this sense, *the steady state represents the long-run equilibrium of the economy.*

To see why an economy always ends up at the steady state, suppose that the economy starts with less than the steady-state level of capital, such as level k_1 in Figure 7-4. In this case, the level of investment exceeds the amount of depreciation. Over time, the capital stock will rise and will continue to rise—along with output $f(k)$ —until it approaches the steady state k^* .

Similarly, suppose that the economy starts with more than the steady-state level of capital, such as level k_2 . In this case, investment is less than depreciation: capital is wearing out faster than it is being replaced. The capital stock will fall, again approaching the steady-state level. Once the capital stock reaches the steady state, investment equals depreciation, and there is no pressure for the capital stock to either increase or decrease.

Approaching the Steady State: A Numerical Example

Let's use a numerical example to see how the Solow model works and how the economy approaches the steady state. For this example, we assume that the production function is

$$Y = K^{1/2}L^{1/2}.$$

From Chapter 3, you will recognize this as the Cobb–Douglas production function with the capital-share parameter α equal to 1/2. To derive the per-worker

production function $f(k)$, divide both sides of the production function by the labor force L :

$$\frac{Y}{L} = \frac{K^{1/2}L^{1/2}}{L}.$$

Rearrange to obtain

$$\frac{Y}{L} = \left(\frac{K}{L}\right)^{1/2}.$$

Because $y = Y/L$ and $k = K/L$, this equation becomes

$$y = k^{1/2},$$

which can also be written as

$$y = \sqrt{k}.$$

This form of the production function states that output per worker equals the square root of the amount of capital per worker.

To complete the example, let's assume that 30 percent of output is saved ($s = 0.3$), that 10 percent of the capital stock depreciates every year ($\delta = 0.1$), and that the economy starts off with 4 units of capital per worker ($k = 4$). Given these numbers, we can now examine what happens to this economy over time.

We begin by looking at the production and allocation of output in the first year, when the economy has 4 units of capital per worker. Here are the steps we follow.

- According to the production function $y = \sqrt{k}$, the 4 units of capital per worker (k) produce 2 units of output per worker (y).
- Because 30 percent of output is saved and invested and 70 percent is consumed, $i = 0.6$ and $c = 1.4$.
- Because 10 percent of the capital stock depreciates, $\delta k = 0.4$.
- With investment of 0.6 and depreciation of 0.4, the change in the capital stock is $\Delta k = 0.2$.

Thus, the economy begins its second year with 4.2 units of capital per worker.

We can do the same calculations for each subsequent year. Table 7-2 shows how the economy progresses. Every year, because investment exceeds depreciation, new capital is added and output grows. Over many years, the economy approaches a steady state with 9 units of capital per worker. In this steady state, investment of 0.9 exactly offsets depreciation of 0.9, so the capital stock and output are no longer growing.

Following the progress of the economy for many years is one way to find the steady-state capital stock, but there is another way that requires fewer calculations. Recall that

$$\Delta k = sf(k) - \delta k.$$

This equation shows how k evolves over time. Because the steady state is (by definition) the value of k at which $\Delta k = 0$, we know that

$$0 = sf(k^*) - \delta k^*,$$

TABLE 7-2

Approaching the Steady State: A Numerical Example

Assumptions: $y = \sqrt{k}$; $s = 0.3$; $\delta = 0.1$; initial $k = 4.0$

Year	k	y	c	i	δk	Δk
1	4.000	2.000	1.400	0.600	0.400	0.200
2	4.200	2.049	1.435	0.615	0.420	0.195
3	4.395	2.096	1.467	0.629	0.440	0.189
4	4.584	2.141	1.499	0.642	0.458	0.184
5	4.768	2.184	1.529	0.655	0.477	0.178
.						
.						
.						
10	5.602	2.367	1.657	0.710	0.560	0.150
.						
.						
.						
25	7.321	2.706	1.894	0.812	0.732	0.080
.						
.						
.						
100	8.962	2.994	2.096	0.898	0.896	0.002
.						
.						
.						
∞	9.000	3.000	2.100	0.900	0.900	0.000

or, equivalently,

$$\frac{k^*}{f(k^*)} = \frac{s}{\delta}.$$

This equation provides a way of finding the steady-state level of capital per worker, k^* . Substituting in the numbers and production function from our example, we obtain

$$\frac{k^*}{\sqrt{k^*}} = \frac{0.3}{0.1}.$$

Now square both sides of this equation to find

$$k^* = 9.$$

The steady-state capital stock is 9 units per worker. This result confirms the calculation of the steady state in Table 7-2.

CASE STUDY

The Miracle of Japanese and German Growth

Japan and Germany are two success stories of economic growth. Although today they are economic superpowers, in 1945 the economies of both countries were in shambles. World War II had destroyed much of their capital stocks. In the decades after the war, however, these two countries experienced some of the most rapid growth rates on record. Between 1948 and 1972, output per person grew at 8.2 percent per year in Japan and 5.7 percent per year in Germany, compared to only 2.2 percent per year in the United States.

Are the postwar experiences of Japan and Germany so surprising from the standpoint of the Solow growth model? Consider an economy in steady state. Now suppose that a war destroys some of the capital stock. (That is, suppose the capital stock drops from k^* to k_1 in Figure 7-4.) Not surprisingly, the level of output falls immediately. But if the saving rate—the fraction of output devoted to saving and investment—is unchanged, the economy will then experience a period of high growth. Output grows because, at the lower capital stock, more capital is added by investment than is removed by depreciation. This high growth continues until the economy approaches its former steady state. Hence, although destroying part of the capital stock immediately reduces output, it is followed by higher-than-normal growth. The “miracle” of rapid growth in Japan and Germany, as it is often described in the business press, is what the Solow model predicts for countries in which war has greatly reduced the capital stock. ■

How Saving Affects Growth

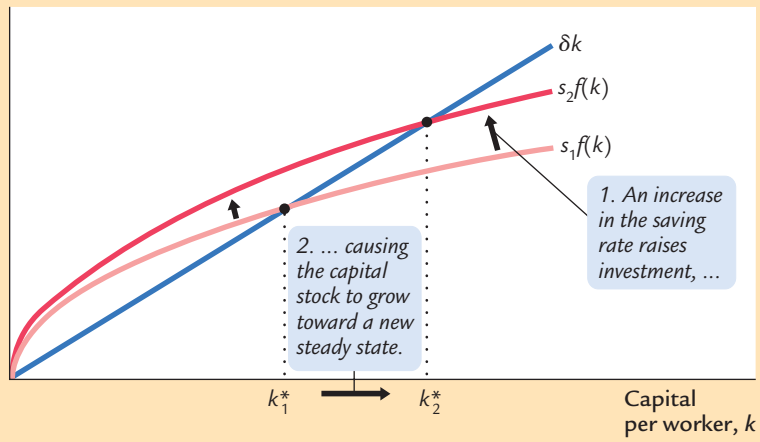
The explanation of Japanese and German growth after World War II is not quite as simple as suggested in the preceding case study. Another relevant fact is that both Japan and Germany save and invest a higher fraction of their output than does the United States. To understand more fully the international differences in economic performance, we must consider the effects of different saving rates.

Consider what happens to an economy when its saving rate increases. Figure 7-5 shows such a change. The economy is assumed to begin in a steady state with saving rate s_1 and capital stock k_1^* . When the saving rate increases from s_1 to s_2 , the $sf(k)$ curve shifts upward. At the initial saving rate s_1 and the initial capital stock k_1^* , the amount of investment just offsets the amount of depreciation. Immediately after the saving rate rises, investment is higher, but the capital stock and depreciation are unchanged. Therefore, investment exceeds depreciation. The capital stock will gradually rise until the economy reaches the new steady state k_2^* , which has a higher capital stock and a higher level of output than the old steady state.

The Solow model shows that the saving rate is a key determinant of the steady-state capital stock. *If the saving rate is high, the economy will have a large capital stock and a high level of output in the steady state. If the saving rate is low, the econ-*

FIGURE 7-5

Investment and depreciation



An Increase in the Saving Rate An increase in the saving rate s implies that the amount of investment for any given capital stock is higher. It therefore shifts the saving function upward. At the initial steady state k_1^* , investment now exceeds depreciation. The capital stock rises until the economy reaches a new steady state k_2^* with more capital and output.

omy will have a small capital stock and a low level of output in the steady state. This conclusion sheds light on many discussions of fiscal policy. As we saw in Chapter 3, a government budget deficit can reduce national saving and crowd out investment. Now we can see that the long-run consequences of a reduced saving rate are a lower capital stock and lower national income. This is why many economists are critical of persistent budget deficits.

What does the Solow model say about the relationship between saving and economic growth? Higher saving leads to faster growth in the Solow model, but only temporarily. An increase in the rate of saving raises growth only until the economy reaches the new steady state. If the economy maintains a high saving rate, it will maintain a large capital stock and a high level of output, but it will not maintain a high rate of growth forever. Policies that alter the steady-state growth rate of income per person are said to have a *growth effect*; we will see examples of such policies in the next chapter. By contrast, a higher saving rate is said to have a *level effect*, because only the level of income per person—not its growth rate—is influenced by the saving rate in the steady state.

Now that we understand how saving and growth interact, we can more fully explain the impressive economic performance of Germany and Japan after World War II. Not only were their initial capital stocks low because of the war, but their steady-state capital stocks were also high because of their high saving rates. Both of these facts help explain the rapid growth of these two countries in the 1950s and 1960s.

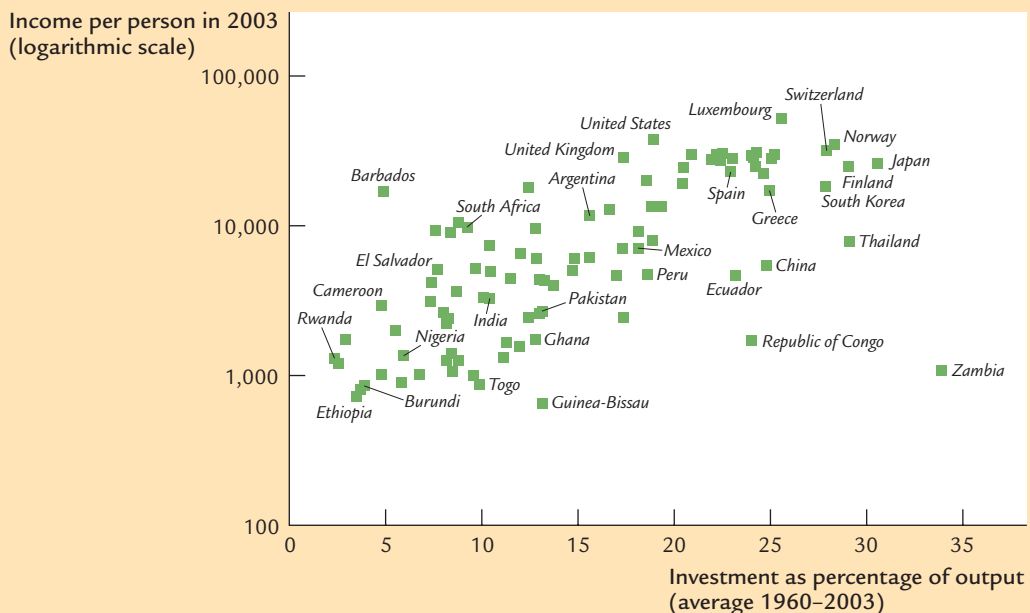
CASE STUDY

Saving and Investment Around the World

We started this chapter with an important question: Why are some countries so rich while others are mired in poverty? Our analysis has taken us a step closer to the answer. According to the Solow model, if a nation devotes a large fraction of its income to saving and investment, it will have a high steady-state capital stock and a high level of income. If a nation saves and invests only a small fraction of its income, its steady-state capital and income will be low.

Let's now look at some data to see if this theoretical result in fact helps explain the large international variation in standards of living. Figure 7-6 is a scatterplot of data from 96 countries. (The figure includes most of the world's economies. It excludes major oil-producing countries and countries that were communist during much of this period, because their experiences are explained by their spe-

FIGURE 7-6



International Evidence on Investment Rates and Income per Person This scatterplot shows the experience of 96 countries, each represented by a single point. The horizontal axis shows the country's rate of investment, and the vertical axis shows the country's income per person. High investment is associated with high income per person, as the Solow model predicts.

Source: Alan Heston, Robert Summers, and Bettina Aten, Penn World Table Version 6.2, Center for International Comparisons of Production, Income and Prices at the University of Pennsylvania, September 2006.

cial circumstances.) The data show a positive relationship between the fraction of output devoted to investment and the level of income per person. That is, countries with high rates of investment, such as the United States and Japan, usually have high incomes, whereas countries with low rates of investment, such as Ethiopia and Burundi, have low incomes. Thus, the data are consistent with the Solow model's prediction that the investment rate is a key determinant of whether a country is rich or poor.

The strong correlation shown in this figure is an important fact, but it raises as many questions as it resolves. One might naturally ask, why do rates of saving and investment vary so much from country to country? There are many potential answers, such as tax policy, retirement patterns, the development of financial markets, and cultural differences. In addition, political stability may play a role: not surprisingly, rates of saving and investment tend to be low in countries with frequent wars, revolutions, and coups. Saving and investment also tend to be low in countries with poor political institutions, as measured by estimates of official corruption. A final interpretation of the evidence in Figure 7-6 is reverse causation: perhaps high levels of income somehow foster high rates of saving and investment. Unfortunately, there is no consensus among economists about which of the many possible explanations is most important.

The association between investment rates and income per person is strong, and it is an important clue to why some countries are rich and others poor, but it is not the whole story. The correlation between these two variables is far from perfect. The United States and Peru, for instance, have had similar investment rates, but income per person is more than eight times higher in the United States. There must be other determinants of living standards beyond saving and investment. Later in this chapter and also in the next one, we return to the international differences in income per person to see what other variables enter the picture. ■

7-2 The Golden Rule Level of Capital

So far, we have used the Solow model to examine how an economy's rate of saving and investment determines its steady-state levels of capital and income. This analysis might lead you to think that higher saving is always a good thing because it always leads to greater income. Yet suppose a nation had a saving rate of 100 percent. That would lead to the largest possible capital stock and the largest possible income. But if all of this income is saved and none is ever consumed, what good is it?

This section uses the Solow model to discuss the optimal amount of capital accumulation from the standpoint of economic well-being. In the next chapter, we discuss how government policies influence a nation's saving rate. But first, in this section, we present the theory behind these policy decisions.

Comparing Steady States

To keep our analysis simple, let's assume that a policymaker can set the economy's saving rate at any level. By setting the saving rate, the policymaker determines the economy's steady state. What steady state should the policymaker choose?

The policymaker's goal is to maximize the well-being of the individuals who make up the society. Individuals themselves do not care about the amount of capital in the economy, or even the amount of output. They care about the amount of goods and services they can consume. Thus, a benevolent policymaker would want to choose the steady state with the highest level of consumption. The steady-state value of k that maximizes consumption is called the **Golden Rule level of capital** and is denoted k_{gold}^* .²

How can we tell whether an economy is at the Golden Rule level? To answer this question, we must first determine steady-state consumption per worker. Then we can see which steady state provides the most consumption.

To find steady-state consumption per worker, we begin with the national income accounts identity

$$y = c + i$$

and rearrange it as

$$c = y - i.$$

Consumption is output minus investment. Because we want to find steady-state consumption, we substitute steady-state values for output and investment. Steady-state output per worker is $f(k^*)$, where k^* is the steady-state capital stock per worker. Furthermore, because the capital stock is not changing in the steady state, investment equals depreciation δk^* . Substituting $f(k^*)$ for y and δk^* for i , we can write steady-state consumption per worker as

$$c^* = f(k^*) - \delta k^*.$$

According to this equation, steady-state consumption is what's left of steady-state output after paying for steady-state depreciation. This equation shows that an increase in steady-state capital has two opposing effects on steady-state consumption. On the one hand, more capital means more output. On the other hand, more capital also means that more output must be used to replace capital that is wearing out.

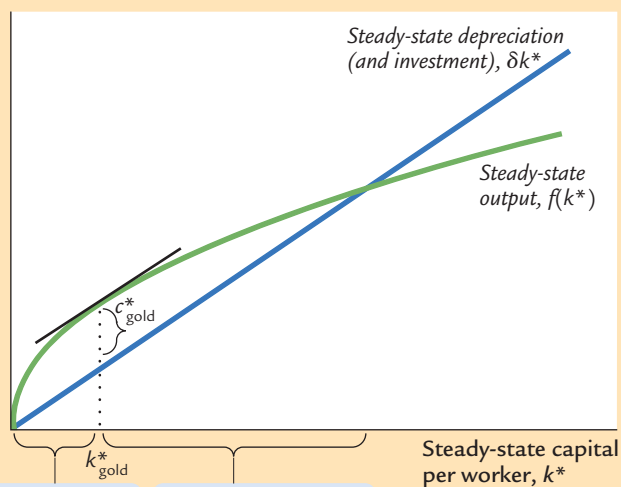
Figure 7-7 graphs steady-state output and steady-state depreciation as a function of the steady-state capital stock. Steady-state consumption is the gap between output and depreciation. This figure shows that there is one level of the capital stock—the Golden Rule level k_{gold}^* —that maximizes consumption.

When comparing steady states, we must keep in mind that higher levels of capital affect both output and depreciation. If the capital stock is below the

² Edmund Phelps, "The Golden Rule of Accumulation: A Fable for Growthmen," *American Economic Review* 51 (September 1961): 638–643.

FIGURE 7-7

Steady-state output and depreciation



Below the Golden Rule steady state, increases in steady-state capital raise steady-state consumption.

Above the Golden Rule steady state, increases in steady-state capital reduce steady-state consumption.

Steady-State Consumption

The economy's output is used for consumption or investment. In the steady state, investment equals depreciation. Therefore, steady-state consumption is the difference between output $f(k^*)$ and depreciation δk^* . Steady-state consumption is maximized at the Golden Rule steady state. The Golden Rule capital stock is denoted k_{gold}^* , and the Golden Rule level of consumption is denoted c_{gold}^* .

Golden Rule level, an increase in the capital stock raises output more than depreciation, so consumption rises. In this case, the production function is steeper than the δk^* line, so the gap between these two curves—which equals consumption—grows as k^* rises. By contrast, if the capital stock is above the Golden Rule level, an increase in the capital stock reduces consumption, because the increase in output is smaller than the increase in depreciation. In this case, the production function is flatter than the δk^* line, so the gap between the curves—consumption—shrinks as k^* rises. At the Golden Rule level of capital, the production function and the δk^* line have the same slope, and consumption is at its greatest level.

We can now derive a simple condition that characterizes the Golden Rule level of capital. Recall that the slope of the production function is the marginal product of capital MPK . The slope of the δk^* line is δ . Because these two slopes are equal at k_{gold}^* , the Golden Rule is described by the equation

$$MPK = \delta.$$

At the Golden Rule level of capital, the marginal product of capital equals the depreciation rate.

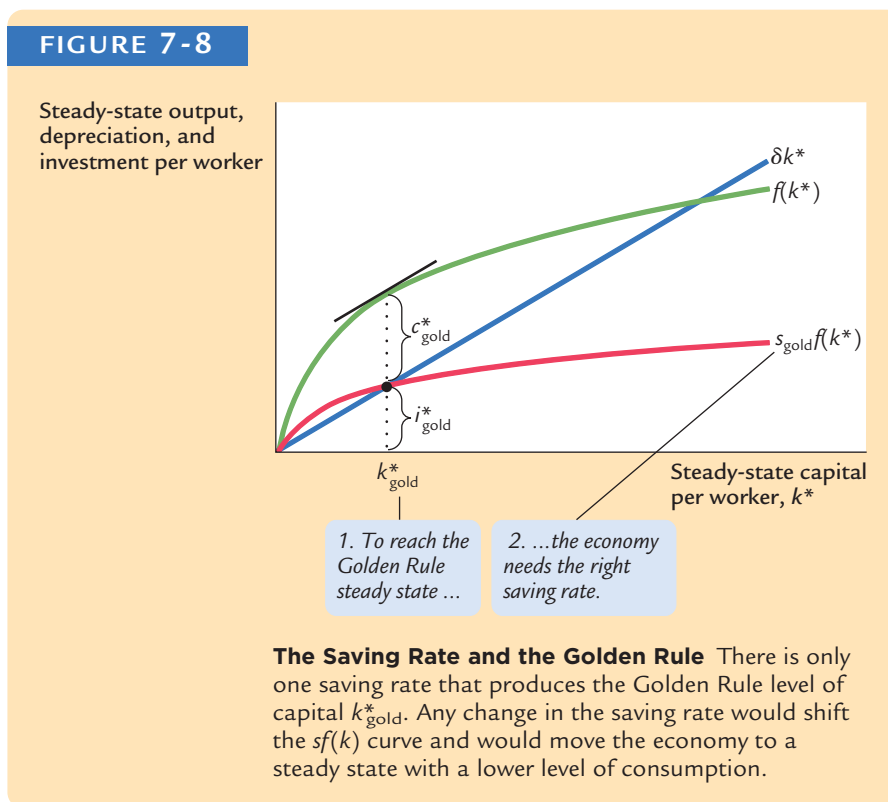
To make the point somewhat differently, suppose that the economy starts at some steady-state capital stock k^* and that the policymaker is considering increasing the capital stock to $k^* + 1$. The amount of extra output from this increase in capital would be $f(k^* + 1) - f(k^*)$, the marginal product of capital MPK . The amount of extra depreciation from having 1 more unit of capital is

the depreciation rate δ . Thus, the net effect of this extra unit of capital on consumption is $MPK - \delta$. If $MPK - \delta > 0$, then increases in capital increase consumption, so k^* must be below the Golden Rule level. If $MPK - \delta < 0$, then increases in capital decrease consumption, so k^* must be above the Golden Rule level. Therefore, the following condition describes the Golden Rule:

$$MPK - \delta = 0.$$

At the Golden Rule level of capital, the marginal product of capital net of depreciation ($MPK - \delta$) equals zero. As we will see, a policymaker can use this condition to find the Golden Rule capital stock for an economy.³

Keep in mind that the economy does not automatically gravitate toward the Golden Rule steady state. If we want any particular steady-state capital stock, such as the Golden Rule, we need a particular saving rate to support it. Figure 7-8 shows the steady state if the saving rate is set to produce the Golden Rule level of capital. If the saving rate is higher than the one used in this figure, the



³ *Mathematical note:* Another way to derive the condition for the Golden Rule uses a bit of calculus. Recall that $c^* = f(k^*) - \delta k^*$. To find the k^* that maximizes c^* , differentiate to find $dc^*/dk^* = f'(k^*) - \delta$ and set this derivative equal to zero. Noting that $f'(k^*)$ is the marginal product of capital, we obtain the Golden Rule condition in the text.

steady-state capital stock will be too high. If the saving rate is lower, the steady-state capital stock will be too low. In either case, steady-state consumption will be lower than it is at the Golden Rule steady state.

Finding the Golden Rule Steady State: A Numerical Example

Consider the decision of a policymaker choosing a steady state in the following economy. The production function is the same as in our earlier example:

$$y = \sqrt{k}.$$

Output per worker is the square root of capital per worker. Depreciation δ is again 10 percent of capital. This time, the policymaker chooses the saving rate s and thus the economy's steady state.

To see the outcomes available to the policymaker, recall that the following equation holds in the steady state:

$$\frac{k^*}{f(k^*)} = \frac{s}{\delta}.$$

In this economy, this equation becomes

$$\frac{k^*}{\sqrt{k^*}} = \frac{s}{0.1}.$$

Squaring both sides of this equation yields a solution for the steady-state capital stock. We find

$$k^* = 100s^2.$$

Using this result, we can compute the steady-state capital stock for any saving rate.

Table 7-3 presents calculations showing the steady states that result from various saving rates in this economy. We see that higher saving leads to a higher capital stock, which in turn leads to higher output and higher depreciation. Steady-state consumption, the difference between output and depreciation, first rises with higher saving rates and then declines. Consumption is highest when the saving rate is 0.5. Hence, a saving rate of 0.5 produces the Golden Rule steady state.

Recall that another way to identify the Golden Rule steady state is to find the capital stock at which the net marginal product of capital ($MPK - \delta$) equals zero. For this production function, the marginal product is⁴

$$MPK = \frac{1}{2\sqrt{k}}.$$

⁴ *Mathematical note:* To derive this formula, note that the marginal product of capital is the derivative of the production function with respect to k .

TABLE 7-3

Finding the Golden Rule Steady State: A Numerical Example

Assumptions: $y = \sqrt{k}$; $\delta = 0.1$						
s	k^*	y^*	δk^*	c^*	MPK	$MPK - \delta$
0.0	0.0	0.0	0.0	0.0	∞	∞
0.1	1.0	1.0	0.1	0.9	0.500	0.400
0.2	4.0	2.0	0.4	1.6	0.250	0.150
0.3	9.0	3.0	0.9	2.1	0.167	0.067
0.4	16.0	4.0	1.6	2.4	0.125	0.025
0.5	25.0	5.0	2.5	2.5	0.100	0.000
0.6	36.0	6.0	3.6	2.4	0.083	-0.017
0.7	49.0	7.0	4.9	2.1	0.071	-0.029
0.8	64.0	8.0	6.4	1.6	0.062	-0.038
0.9	81.0	9.0	8.1	0.9	0.056	-0.044
1.0	100.0	10.0	10.0	0.0	0.050	-0.050

Using this formula, the last two columns of Table 7-3 present the values of MPK and $MPK - \delta$ in the different steady states. Note that the net marginal product of capital is exactly zero when the saving rate is at its Golden Rule value of 0.5. Because of diminishing marginal product, the net marginal product of capital is greater than zero whenever the economy saves less than this amount, and it is less than zero whenever the economy saves more.

This numerical example confirms that the two ways of finding the Golden Rule steady state—looking at steady-state consumption or looking at the marginal product of capital—give the same answer. If we want to know whether an actual economy is currently at, above, or below its Golden Rule capital stock, the second method is usually more convenient, because it is relatively straightforward to estimate the marginal product of capital. By contrast, evaluating an economy with the first method requires estimates of steady-state consumption at many different saving rates; such information is harder to obtain. Thus, when we apply this kind of analysis to the U.S. economy in the next chapter, we will evaluate U.S. saving by examining the marginal product of capital. Before engaging in that policy analysis, however, we need to proceed further in our development and understanding of the Solow model.

The Transition to the Golden Rule Steady State

Let's now make our policymaker's problem more realistic. So far, we have been assuming that the policymaker can simply choose the economy's steady state and jump there immediately. In this case, the policymaker would choose the steady state with highest consumption—the Golden Rule steady state. But now suppose that the economy has reached a steady state other than the Golden Rule. What

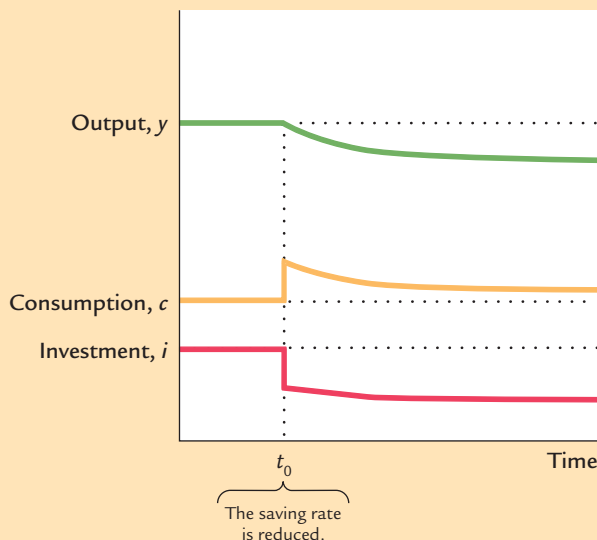
happens to consumption, investment, and capital when the economy makes the transition between steady states? Might the impact of the transition deter the policymaker from trying to achieve the Golden Rule?

We must consider two cases: the economy might begin with more capital than in the Golden Rule steady state, or with less. It turns out that the two cases offer very different problems for policymakers. (As we will see in the next chapter, the second case—too little capital—describes most actual economies, including that of the United States.)

Starting With Too Much Capital We first consider the case in which the economy begins at a steady state with more capital than it would have in the Golden Rule steady state. In this case, the policymaker should pursue policies aimed at reducing the rate of saving in order to reduce the capital stock. Suppose that these policies succeed and that at some point—call it time t_0 —the saving rate falls to the level that will eventually lead to the Golden Rule steady state.

Figure 7-9 shows what happens to output, consumption, and investment when the saving rate falls. The reduction in the saving rate causes an immediate increase in consumption and a decrease in investment. Because investment and depreciation were equal in the initial steady state, investment will now be less than depreciation, which means the economy is no longer in a steady state. Gradually, the capital stock falls, leading to reductions in output, consumption, and investment. These variables continue to fall until the economy reaches the new steady state. Because we are assuming that the new steady state is the Golden Rule steady state, consumption must be higher than it was before the change in the saving rate, even though output and investment are lower.

FIGURE 7-9



Reducing Saving When Starting With More Capital Than in the Golden Rule Steady State This figure shows what happens over time to output, consumption, and investment when the economy begins with more capital than the Golden Rule level and the saving rate is reduced. The reduction in the saving rate (at time t_0) causes an immediate increase in consumption and an equal decrease in investment. Over time, as the capital stock falls, output, consumption, and investment fall together. Because the economy began with too much capital, the new steady state has a higher level of consumption than the initial steady state.

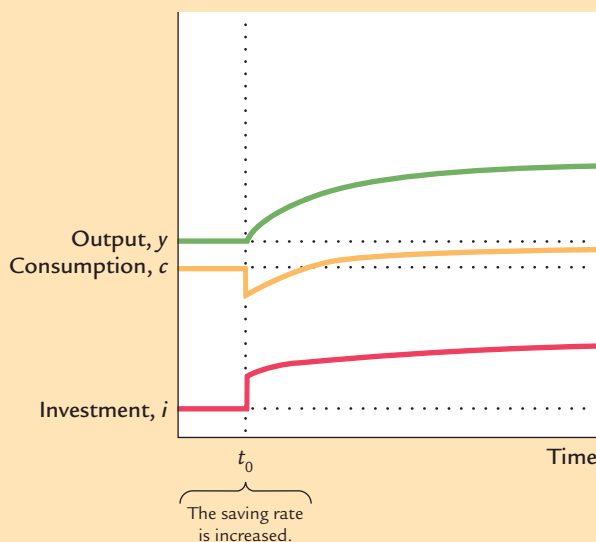
Note that, compared to the old steady state, consumption is higher not only in the new steady state but also along the entire path to it. When the capital stock exceeds the Golden Rule level, reducing saving is clearly a good policy, for it increases consumption at every point in time.

Starting With Too Little Capital When the economy begins with less capital than in the Golden Rule steady state, the policymaker must raise the saving rate to reach the Golden Rule. Figure 7-10 shows what happens. The increase in the saving rate at time t_0 causes an immediate fall in consumption and a rise in investment. Over time, higher investment causes the capital stock to rise. As capital accumulates, output, consumption, and investment gradually increase, eventually approaching the new steady-state levels. Because the initial steady state was below the Golden Rule, the increase in saving eventually leads to a higher level of consumption than that which prevailed initially.

Does the increase in saving that leads to the Golden Rule steady state raise economic welfare? Eventually it does, because the new steady-state level of consumption is higher than the initial level. But achieving that new steady state requires an initial period of reduced consumption. Note the contrast to the case in which the economy begins above the Golden Rule. *When the economy begins above the Golden Rule, reaching the Golden Rule produces higher consumption at all points in time. When the economy begins below the Golden Rule, reaching the Golden Rule requires initially reducing consumption to increase consumption in the future.*

When deciding whether to try to reach the Golden Rule steady state, policymakers have to take into account that current consumers and future consumers are not always the same people. Reaching the Golden Rule achieves the highest steady-state level of consumption and thus benefits future generations. But when

FIGURE 7-10



Increasing Saving When Starting With Less Capital Than in the Golden Rule Steady State This figure shows what happens over time to output, consumption, and investment when the economy begins with less capital than the Golden Rule level and the saving rate is increased. The increase in the saving rate (at time t_0) causes an immediate drop in consumption and an equal jump in investment. Over time, as the capital stock grows, output, consumption, and investment increase together. Because the economy began with less capital than the Golden Rule level, the new steady state has a higher level of consumption than the initial steady state.

the economy is initially below the Golden Rule, reaching the Golden Rule requires raising investment and thus lowering the consumption of current generations. Thus, when choosing whether to increase capital accumulation, the policymaker faces a tradeoff among the welfare of different generations. A policymaker who cares more about current generations than about future ones may decide not to pursue policies to reach the Golden Rule steady state. By contrast, a policymaker who cares about all generations equally will choose to reach the Golden Rule. Even though current generations will consume less, an infinite number of future generations will benefit by moving to the Golden Rule.

Thus, optimal capital accumulation depends crucially on how we weigh the interests of current and future generations. The biblical Golden Rule tells us, “do unto others as you would have them do unto you.” If we heed this advice, we give all generations equal weight. In this case, it is optimal to reach the Golden Rule level of capital—which is why it is called the “Golden Rule.”

7-3 Population Growth

The basic Solow model shows that capital accumulation, by itself, cannot explain sustained economic growth: high rates of saving lead to high growth temporarily, but the economy eventually approaches a steady state in which capital and output are constant. To explain the sustained economic growth that we observe in most parts of the world, we must expand the Solow model to incorporate the other two sources of economic growth—population growth and technological progress. In this section we add population growth to the model.

Instead of assuming that the population is fixed, as we did in Sections 7-1 and 7-2, we now suppose that the population and the labor force grow at a constant rate n . For example, the U.S. population grows about 1 percent per year, so $n = 0.01$. This means that if 150 million people are working one year, then 151.5 million (1.01×150) are working the next year, and 153.015 million (1.01×151.5) the year after that, and so on.

The Steady State With Population Growth

How does population growth affect the steady state? To answer this question, we must discuss how population growth, along with investment and depreciation, influences the accumulation of capital per worker. As we noted before, investment raises the capital stock, and depreciation reduces it. But now there is a third force acting to change the amount of capital per worker: the growth in the number of workers causes capital per worker to fall.

We continue to let lowercase letters stand for quantities per worker. Thus, $k = K/L$ is capital per worker, and $y = Y/L$ is output per worker. Keep in mind, however, that the number of workers is growing over time.

The change in the capital stock per worker is

$$\Delta k = i - (\delta + n)k.$$

This equation shows how investment, depreciation, and population growth influence the per-worker capital stock. Investment increases k , whereas depreciation and population growth decrease k . We saw this equation earlier in this chapter for the special case of a constant population ($n = 0$).

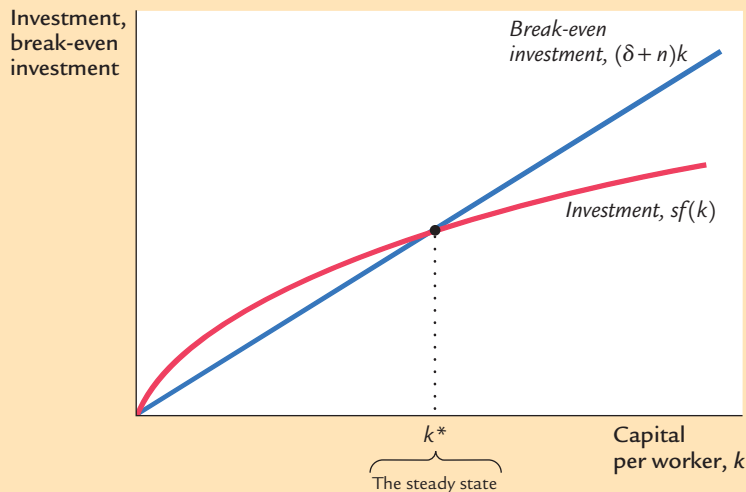
We can think of the term $(\delta + n)k$ as defining *break-even investment*—the amount of investment necessary to keep the capital stock per worker constant. Break-even investment includes the depreciation of existing capital, which equals δk . It also includes the amount of investment necessary to provide new workers with capital. The amount of investment necessary for this purpose is nk , because there are n new workers for each existing worker and because k is the amount of capital for each worker. The equation shows that population growth reduces the accumulation of capital per worker much the way depreciation does. Depreciation reduces k by wearing out the capital stock, whereas population growth reduces k by spreading the capital stock more thinly among a larger population of workers.⁵

Our analysis with population growth now proceeds much as it did previously. First, we substitute $sf(k)$ for i . The equation can then be written as

$$\Delta k = sf(k) - (\delta + n)k.$$

To see what determines the steady-state level of capital per worker, we use Figure 7-11, which extends the analysis of Figure 7-4 to include the effects of pop-

FIGURE 7-11



Population Growth in the Solow Model Depreciation and population growth are two reasons the capital stock per worker shrinks. If n is the rate of population growth and δ is the rate of depreciation, then $(\delta + n)k$ is *break-even investment*—the amount of investment necessary to keep constant the capital stock per worker k . For the economy to be in a steady state, investment $sf(k)$ must offset the effects of depreciation and population growth $(\delta + n)k$. This is represented by the crossing of the two curves.

⁵ *Mathematical note:* Formally deriving the equation for the change in k requires a bit of calculus. Note that the change in k per unit of time is $dk/dt = d(K/L)/dt$. After applying the standard rules of calculus, we can write this as $dk/dt = (1/L)(dK/dt) - (K/L^2)(dL/dt)$. Now use the following facts to substitute in this equation: $dK/dt = I - \delta K$ and $(dL/dt)/L = n$. After a bit of manipulation, this produces the equation in the text.

ulation growth. An economy is in a steady state if capital per worker k is unchanging. As before, we designate the steady-state value of k as k^* . If k is less than k^* , investment is greater than break-even investment, so k rises. If k is greater than k^* , investment is less than break-even investment, so k falls.

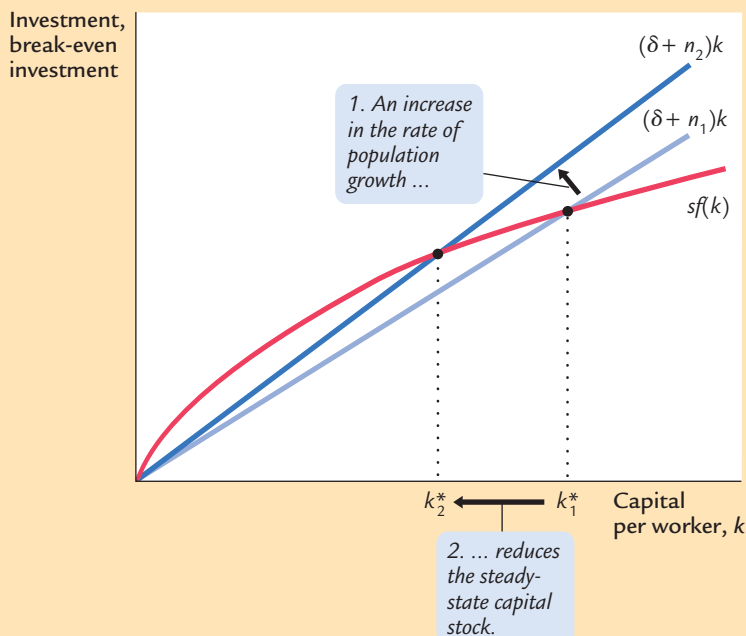
In the steady state, the positive effect of investment on the capital stock per worker exactly balances the negative effects of depreciation and population growth. That is, at k^* , $\Delta k = 0$ and $i^* = \delta k^* + nk^*$. Once the economy is in the steady state, investment has two purposes. Some of it (δk^*) replaces the depreciated capital, and the rest (nk^*) provides the new workers with the steady-state amount of capital.

The Effects of Population Growth

Population growth alters the basic Solow model in three ways. First, it brings us closer to explaining sustained economic growth. In the steady state with population growth, capital per worker and output per worker are constant. Because the number of workers is growing at rate n , however, *total* capital and *total* output must also be growing at rate n . Hence, although population growth cannot explain sustained growth in the standard of living (because output per worker is constant in the steady state), it can help explain sustained growth in total output.

Second, population growth gives us another explanation for why some countries are rich and others are poor. Consider the effects of an increase in population growth. Figure 7-12 shows that an increase in the rate of population

FIGURE 7-12



The Impact of Population Growth

An increase in the rate of population growth from n_1 to n_2 shifts the line representing population growth and depreciation upward. The new steady state k_2^* has a lower level of capital per worker than the initial steady state k_1^* . Thus, the Solow model predicts that economies with higher rates of population growth will have lower levels of capital per worker and therefore lower incomes.

growth from n_1 to n_2 reduces the steady-state level of capital per worker from k_1^* to k_2^* . Because k^* is lower and because $y^* = f(k^*)$, the level of output per worker y^* is also lower. Thus, the Solow model predicts that countries with higher population growth will have lower levels of GDP per person. Notice that a change in the population growth rate, like a change in the saving rate, has a level effect on income per person but does not affect the steady-state growth rate of income per person.

Finally, population growth affects our criterion for determining the Golden Rule (consumption-maximizing) level of capital. To see how this criterion changes, note that consumption per worker is

$$c = y - i.$$

Because steady-state output is $f(k^*)$ and steady-state investment is $(\delta + n)k^*$, we can express steady-state consumption as

$$c^* = f(k^*) - (\delta + n)k^*.$$

Using an argument largely the same as before, we conclude that the level of k^* that maximizes consumption is the one at which

$$MPK = \delta + n,$$

or equivalently,

$$MPK - \delta = n.$$

In the Golden Rule steady state, the marginal product of capital net of depreciation equals the rate of population growth.

CASE STUDY

Population Growth Around the World

Let's return now to the question of why standards of living vary so much around the world. The analysis we have just completed suggests that population growth may be one of the answers. According to the Solow model, a nation with a high rate of population growth will have a low steady-state capital stock per worker and thus also a low level of income per worker. In other words, high population growth tends to impoverish a country because it is hard to maintain a high level of capital per worker when the number of workers is growing quickly. To see whether the evidence supports this conclusion, we again look at cross-country data.

Figure 7-13 is a scatterplot of data for the same 96 countries examined in the previous case study (and in Figure 7-6). The figure shows that countries with high rates of population growth tend to have low levels of income per person. The international evidence is consistent with our model's prediction that the rate of population growth is one determinant of a country's standard of living.

This conclusion is not lost on policymakers. Those trying to pull the world's poorest nations out of poverty, such as the advisers sent to developing

FIGURE 7-13



International Evidence on Population Growth and Income per Person This figure is a scatterplot of data from 96 countries. It shows that countries with high rates of population growth tend to have low levels of income per person, as the Solow model predicts.

Source: Alan Heston, Robert Summers, and Bettina Aten, Penn World Table Version 6.2, Center for International Comparisons of Production, Income and Prices at the University of Pennsylvania, September 2006.

nations by the World Bank, often advocate reducing fertility by increasing education about birth-control methods and expanding women's job opportunities. Toward the same end, China has followed the totalitarian policy of allowing only one child per couple. These policies to reduce population growth should, if the Solow model is right, raise income per person in the long run.

In interpreting the cross-country data, however, it is important to keep in mind that correlation does not imply causation. The data show that low population growth is typically associated with high levels of income per person, and the Solow model offers one possible explanation for this fact, but other explanations are also possible. It is conceivable that high income encourages low population growth, perhaps because birth-control techniques are more readily available in richer countries. The international data can help us evaluate a theory of growth, such as the Solow model, because they show us whether the theory's predictions are borne out in the world. But often more than one theory can explain the same facts. ■

Alternative Perspectives on Population Growth

The Solow growth model highlights the interaction between population growth and capital accumulation. In this model, high population growth reduces output per worker because rapid growth in the number of workers forces the capital stock to be spread more thinly, so in the steady state, each worker is equipped with less capital. The model omits some other potential effects of population growth. Here we consider two—one emphasizing the interaction of population with natural resources, the other emphasizing the interaction of population with technology.

The Malthusian Model In his book *An Essay on the Principle of Population as It Affects the Future Improvement of Society*, the early economist Thomas Robert Malthus (1766–1834) offered what may be history’s most chilling forecast. Malthus argued that an ever increasing population would continually strain society’s ability to provide for itself. Mankind, he predicted, would forever live in poverty.

Malthus began by noting that “food is necessary to the existence of man” and that “the passion between the sexes is necessary and will remain nearly in its present state.” He concluded that “the power of population is infinitely greater than the power in the earth to produce subsistence for man.” According to Malthus, the only check on population growth was “misery and vice.” Attempts by charities or governments to alleviate poverty were counterproductive, he argued, because they merely allowed the poor to have more children, placing even greater strains on society’s productive capabilities.

The Malthusian model may have described the world when Malthus lived, but its prediction that mankind would remain in poverty forever has proven very wrong. The world population has increased about sixfold over the past two centuries, but average living standards are much higher. Because of economic growth, chronic hunger and malnutrition are less common now than they were in Malthus’s day. Famines occur from time to time, but they are more often the result of unequal income distribution or political instability than the inadequate production of food.

Malthus failed to foresee that growth in mankind’s ingenuity would more than offset the effects of a larger population. Pesticides, fertilizers, mechanized farm equipment, new crop varieties, and other technological advances that Malthus never imagined have allowed each farmer to feed ever greater numbers of people. Even with more mouths to feed, fewer farmers are necessary because each farmer is so productive. Today, fewer than 2 percent of Americans work on farms, producing enough food to feed the nation and some excess to export as well.

In addition, although the “passion between the sexes” is just as strong now as it was in Malthus’s day, the link between passion and population growth that Malthus assumed has been broken by modern birth control. Many advanced nations, such as those in western Europe, are now experiencing fertility below replacement rates. Over the next century, shrinking populations may be more

likely than rapidly expanding ones. There is now little reason to think that an ever expanding population will overwhelm food production and doom mankind to poverty.⁶

The Kremerian Model While Malthus saw population growth as a threat to rising living standards, economist Michael Kremer has suggested that world population growth is a key driver of advancing economic prosperity. If there are more people, Kremer argues, then there are more scientists, inventors, and engineers to contribute to innovation and technological progress.

As evidence for this hypothesis, Kremer begins by noting that over the broad span of human history, world growth rates have increased together with world population. For example, world growth was more rapid when the world population was 1 billion (which occurred around the year 1800) than it was when the population was only 100 million (around 500 B.C.). This fact is consistent with the hypothesis that having more people induces more technological progress.

Kremer's second, more compelling piece of evidence comes from comparing regions of the world. The melting of the polar ice caps at the end of the ice age around 10,000 B.C. flooded the land bridges and separated the world into several distinct regions that could not communicate with one another for thousands of years. If technological progress is more rapid when there are more people to discover things, then the more populous regions should have experienced more rapid growth.

And, indeed, they did. The most successful region of the world in 1500 (when Columbus reestablished technological contact) included the “Old World” civilizations of the large Eurasia–Africa region. Next in technological development were the Aztec and Mayan civilizations in the Americas, followed by the hunter-gatherers of Australia, and then the primitive people of Tasmania, who lacked even fire-making and most stone and bone tools. The least populous isolated region was Flinders Island, a tiny island between Tasmania and Australia. With few people to contribute new innovations, Flinders Island had the least technological advance and, in fact, seemed to regress. Around 3000 B.C., human society on Flinders Island died out completely.

Kremer concludes from this evidence that a large population is a prerequisite for technological advance.⁷

⁶ For modern analyses of the Malthusian model, see Oded Galor and David N. Weil, “Population, Technology, and Growth: From Malthusian Stagnation to the Demographic Transition and Beyond,” *American Economic Review* 90 (September 2000): 806–828; and Gary D. Hansen and Edward C. Prescott, “Malthus to Solow,” *American Economic Review* 92 (September 2002): 1205–1217.

⁷ Michael Kremer, “Population Growth and Technological Change: One Million B.C. to 1990,” *Quarterly Journal of Economics* 108 (August 1993): 681–716.

7-4 Conclusion

This chapter has started the process of building the Solow growth model. The model as developed so far shows how saving and population growth determine the economy's steady-state capital stock and its steady-state level of income per person. As we have seen, it sheds light on many features of actual growth experiences—why Germany and Japan grew so rapidly after being devastated by World War II, why countries that save and invest a high fraction of their output are richer than countries that save and invest a smaller fraction, and why countries with high rates of population growth are poorer than countries with low rates of population growth.

What the model cannot do, however, is explain the persistent growth in living standards we observe in most countries. In the model we have developed so far, output per worker stops growing when the economy reaches its steady state. To explain persistent growth, we need to introduce technological progress into the model. That is our first job in the next chapter.

Summary

1. The Solow growth model shows that in the long run, an economy's rate of saving determines the size of its capital stock and thus its level of production. The higher the rate of saving, the higher the stock of capital and the higher the level of output.
2. In the Solow model, an increase in the rate of saving has a level effect on income per person: it causes a period of rapid growth, but eventually that growth slows as the new steady state is reached. Thus, although a high saving rate yields a high steady-state level of output, saving by itself cannot generate persistent economic growth.
3. The level of capital that maximizes steady-state consumption is called the Golden Rule level. If an economy has more capital than in the Golden Rule steady state, then reducing saving will increase consumption at all points in time. By contrast, if the economy has less capital than in the Golden Rule steady state, then reaching the Golden Rule requires increased investment and thus lower consumption for current generations.
4. The Solow model shows that an economy's rate of population growth is another long-run determinant of the standard of living. According to the Solow model, the higher the rate of population growth, the lower the steady-state levels of capital per worker and output per worker. Other theories highlight other effects of population growth. Malthus suggested that population growth will strain the natural resources necessary to produce food; Kremer suggested that a large population may promote technological progress.

KEY CONCEPTS

Solow growth model

Steady state

Golden Rule level of capital

QUESTIONS FOR REVIEW

1. In the Solow model, how does the saving rate affect the steady-state level of income? How does it affect the steady-state rate of growth?
2. Why might an economic policymaker choose the Golden Rule level of capital?
3. Might a policymaker choose a steady state with more capital than in the Golden Rule steady state? With less capital than in the Golden Rule steady state? Explain your answers.
4. In the Solow model, how does the rate of population growth affect the steady-state level of income? How does it affect the steady-state rate of growth?

PROBLEMS AND APPLICATIONS

1. Country A and country B both have the production function

$$Y = F(K, L) = K^{1/2}L^{1/2}.$$
 - a. Does this production function have constant returns to scale? Explain.
 - b. What is the per-worker production function, $y = f(k)$?
 - c. Assume that neither country experiences population growth or technological progress and that 5 percent of capital depreciates each year. Assume further that country A saves 10 percent of output each year and country B saves 20 percent of output each year. Using your answer from part (b) and the steady-state condition that investment equals depreciation, find the steady-state level of capital per worker for each country. Then find the steady-state levels of income per worker and consumption per worker.
 - d. Suppose that both countries start off with a capital stock per worker of 2. What are the levels of income per worker and consumption per worker? Remembering that the change in the capital stock is investment less depreciation, use a calculator or a computer spreadsheet to show how the capital stock per worker will evolve over time in both countries. For each year, calculate income per worker and consumption per worker. How many years will it be before the consumption in country B is higher than the consumption in country A?
2. In the discussion of German and Japanese postwar growth, the text describes what happens when part of the capital stock is destroyed in a war. By contrast, suppose that a war does not directly affect the capital stock, but that casualties reduce the labor force. Assume the economy was in a steady state before the war, the saving rate is unchanged, and the rate of population growth after the war returns to normal.
 - a. What is the immediate impact of the war on total output and on output per person?
 - b. What happens subsequently to output per worker in the postwar economy? Is the growth rate of output per worker after the war smaller or greater than normal?
3. Consider an economy described by the production function: $Y = F(K, L) = K^{0.3}L^{0.7}$.
 - a. What is the per-worker production function?
 - b. Assuming no population growth or technological progress, find the steady-state capital stock per worker, output per worker, and consumption per worker as a function of the saving rate and the depreciation rate.

- c. Assume that the depreciation rate is 10 percent per year. Make a table showing steady-state capital per worker, output per worker, and consumption per worker for saving rates of 0 percent, 10 percent, 20 percent, 30 percent, and so on. (You will need a calculator with an exponent key for this.) What saving rate maximizes output per worker? What saving rate maximizes consumption per worker?
- d. (Harder) Use calculus to find the marginal product of capital. Add to your table the marginal product of capital net of depreciation for each of the saving rates. What does your table show?
4. “Devoting a larger share of national output to investment would help restore rapid productivity growth and rising living standards.” Do you agree with this claim? Explain.
5. One view of the consumption function is that workers have high propensities to consume and capitalists have low propensities to consume. To explore the implications of this view, suppose that an economy consumes all wage income and saves all capital income. Show that if the factors of production earn their marginal product, this economy reaches the Golden Rule level of capital. (*Hint:* Begin with the identity that saving equals investment. Then use the steady-state condition that investment is just enough to keep up with depreciation and population growth and the fact that saving equals capital income in this economy.)
6. Many demographers predict that the United States will have zero population growth in the twenty-first century, in contrast to average population growth of about 1 percent per year in the twentieth century. Use the Solow model to forecast the effect of this slowdown in population growth on the growth of total output and the growth of output per person. Consider the effects both in the steady state and in the transition between steady states.
7. In the Solow model, population growth leads to steady-state growth in total output, but not in output per worker. Do you think this would still be true if the production function exhibited increasing or decreasing returns to scale? Explain. (For the definitions of increasing and decreasing returns to scale, see Chapter 3, “Problems and Applications,” Problem 2.)
8. Consider how unemployment would affect the Solow growth model. Suppose that output is produced according to the production function $Y = K^\alpha[(1 - u)L]^{1-\alpha}$, where K is capital, L is the labor force, and u is the natural rate of unemployment. The national saving rate is s , the labor force grows at rate n , and capital depreciates at rate δ .
- Express output per worker ($y = Y/L$) as a function of capital per worker ($k = K/L$) and the natural rate of unemployment. Describe the steady state of this economy.
 - Suppose that some change in government policy reduces the natural rate of unemployment. Describe how this change affects output both immediately and over time. Is the steady-state effect on output larger or smaller than the immediate effect? Explain.
9. Choose two countries that interest you—one rich and one poor. What is the income per person in each country? Find some data on country characteristics that might help explain the difference in income: investment rates, population growth rates, educational attainment, and so on. (*Hint:* The Web site of the World Bank, www.worldbank.org, is one place to find such data.) How might you figure out which of these factors is most responsible for the observed income difference?